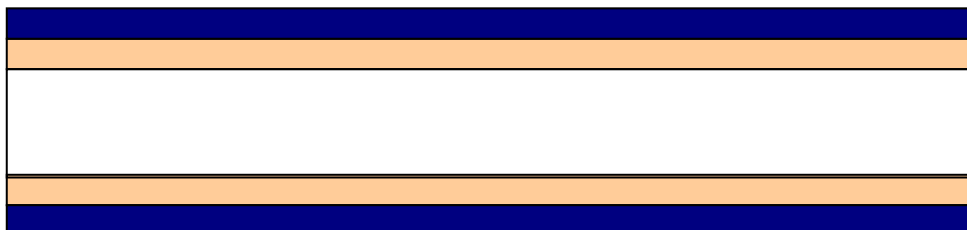


FAIRE UN MULTICOUCHES EN 18 ETAPES

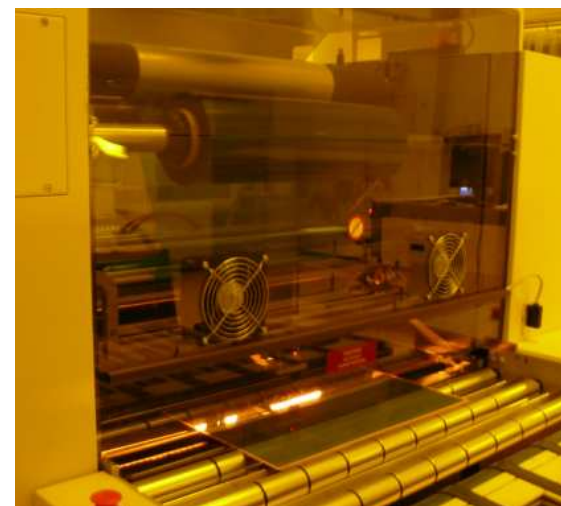


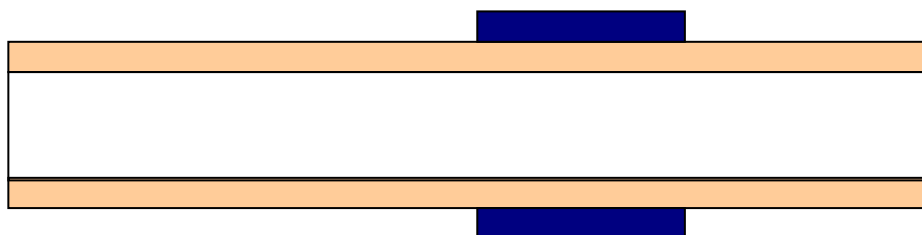
 **cuivre de base**  **FR4**



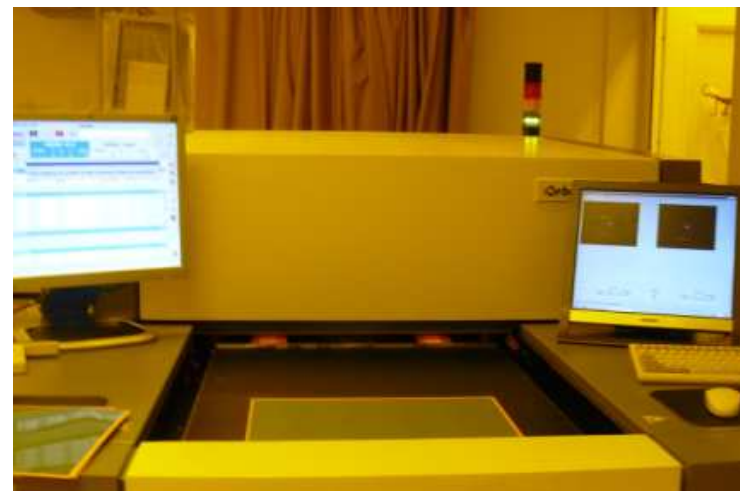
 **cuivre de base**
 **Film Sec**

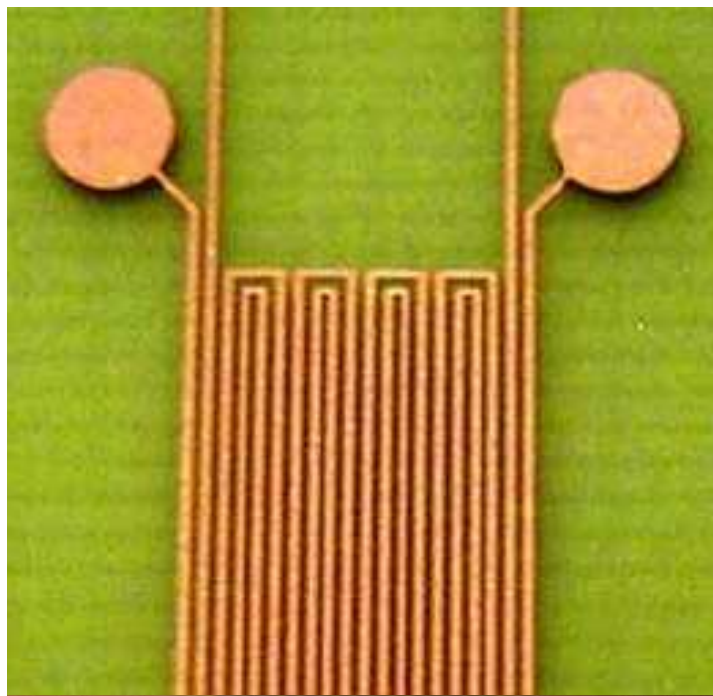
 **FR4**





 **cuivre de base**  **FR4**
 **Film Sec**

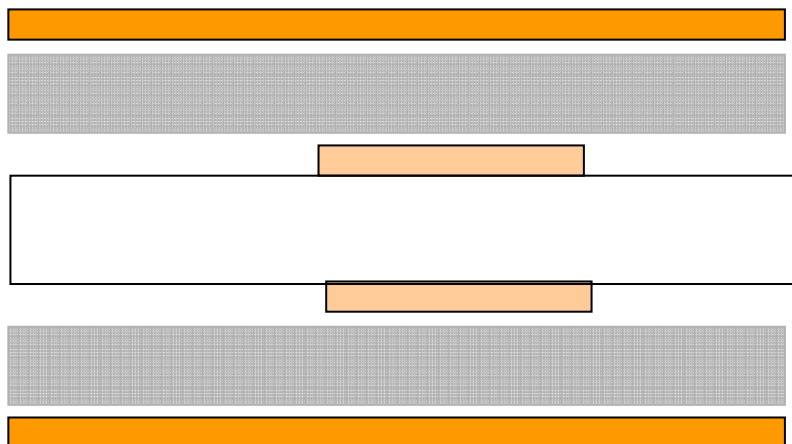





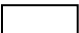


 **cuivre de base**  **FR4**

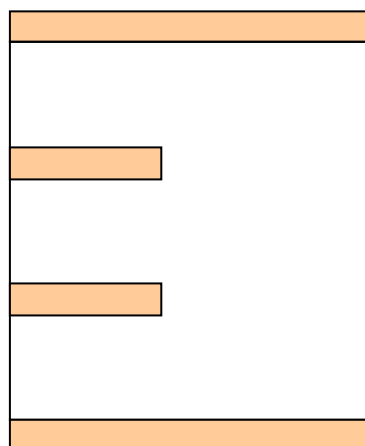
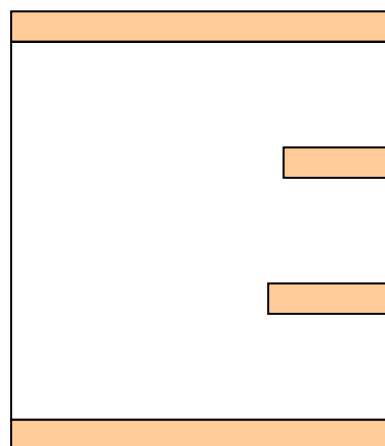


Empilage couches internes



-  **cuivre de base**
-  **Feuillard cuivre**
-  **Pregs FR4**
-  **FR4**

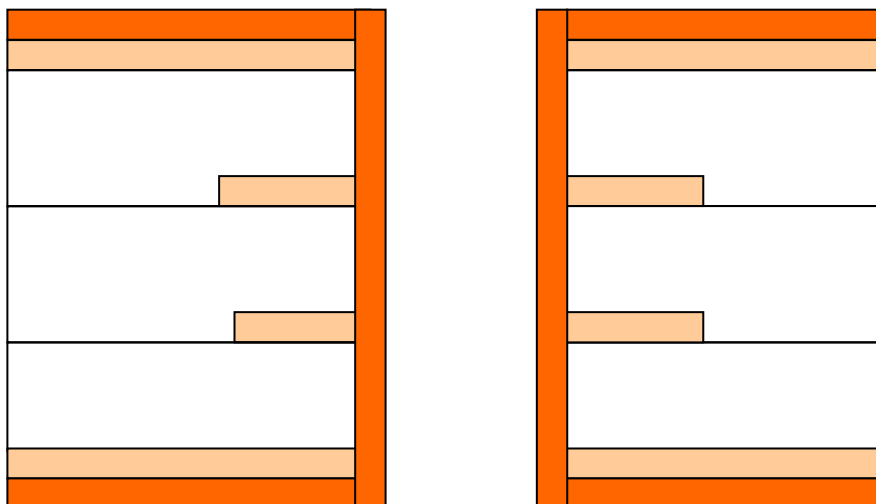




 **cuiivre de base**

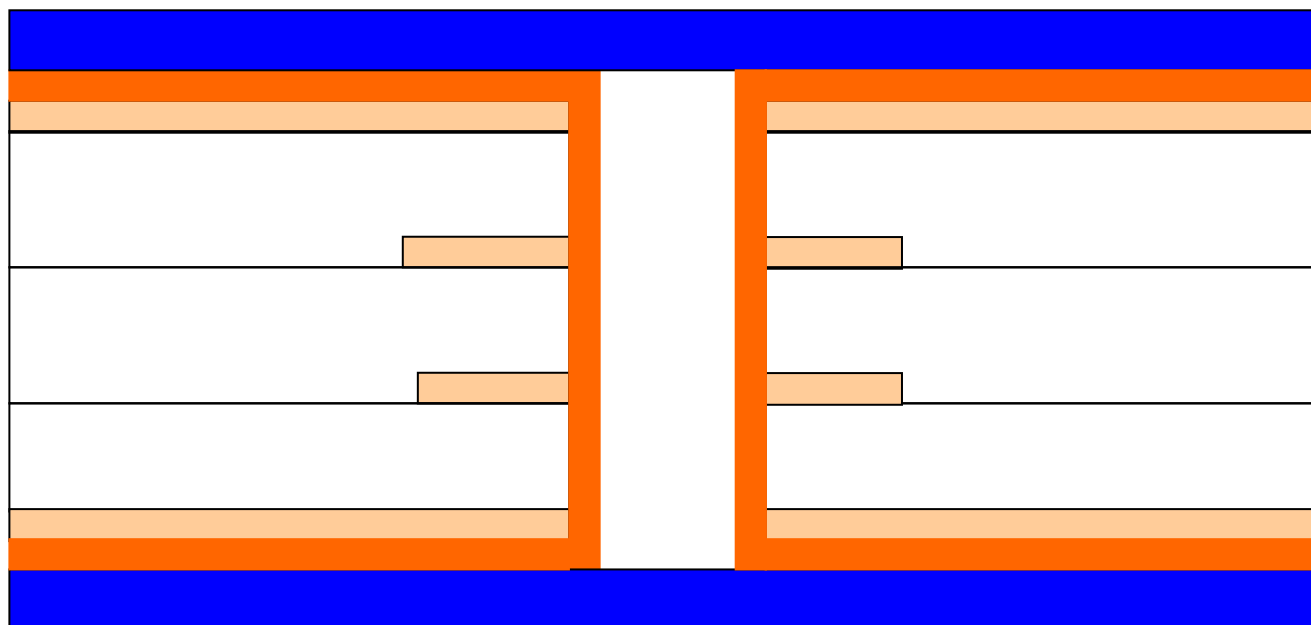
 **FR4**



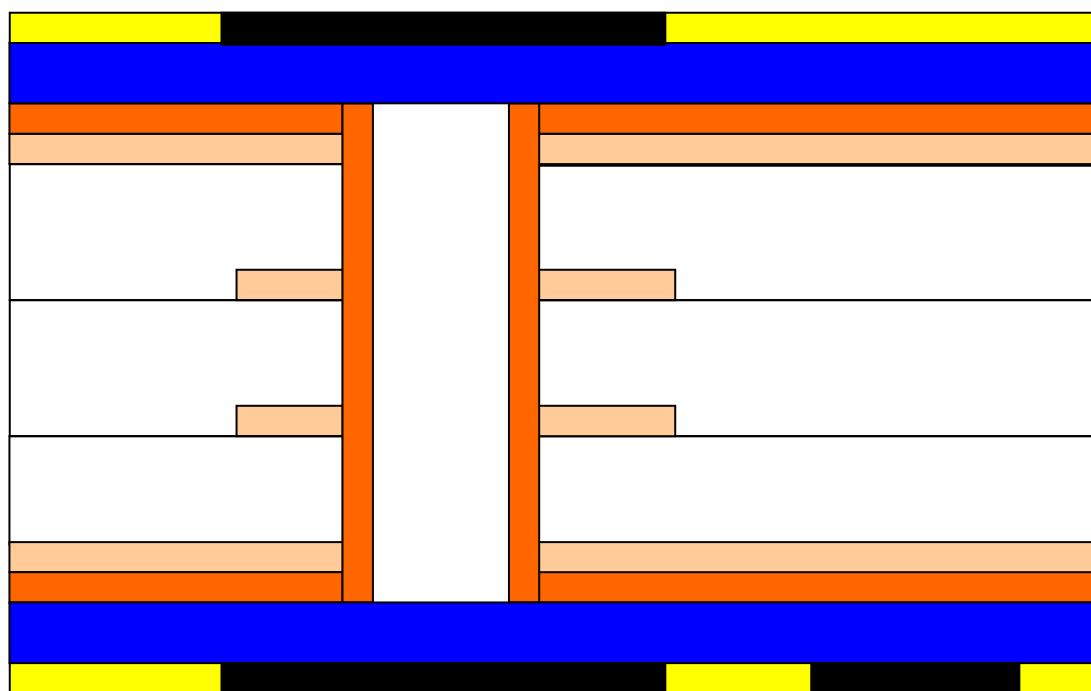


 cuivre de base  FR4
 dépôt de cuivre : +8 µ



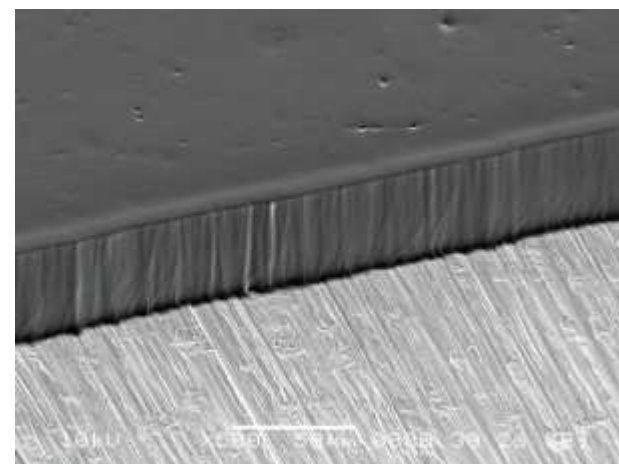
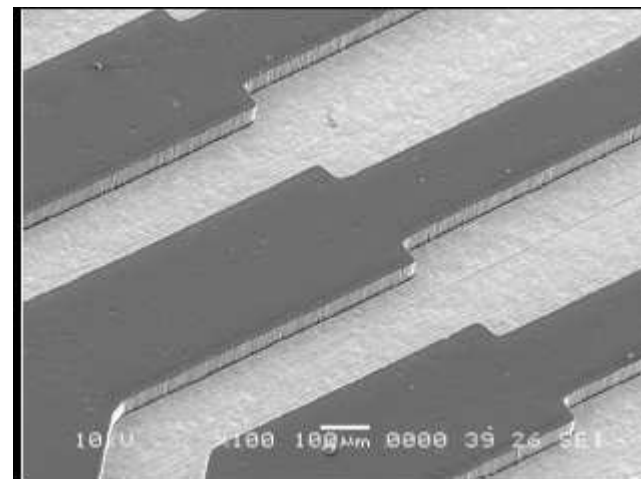
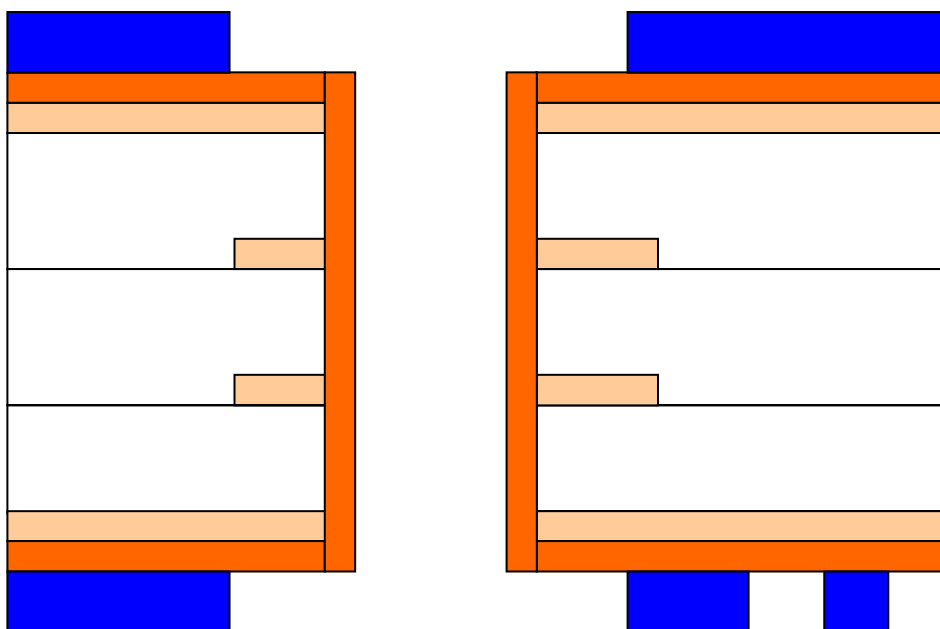


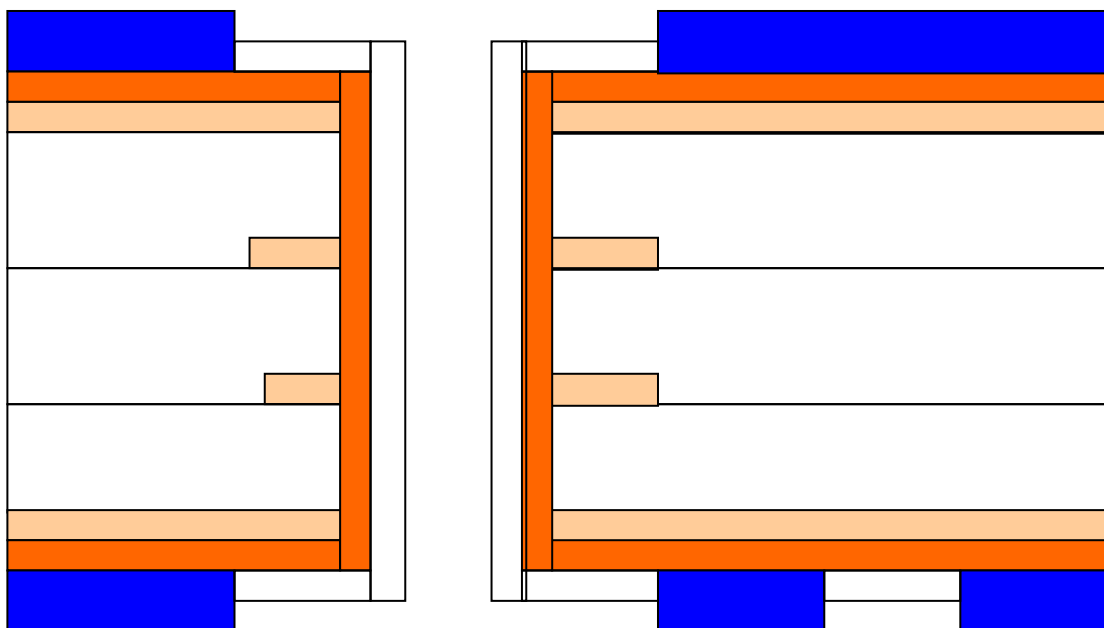
- cuivre de base
- FR4
- dépôt de cuivre chimique : +8 μ
- film sec



“future” Pastille

“future” Piste





-  dépôt de cuivre de 15 μ à 30 μ uniquement sur les zones épargnées par le film (pistes et pastilles)

