



GENYMOBILE

Let IT be mobile

Embedded Android: Strengths and Weaknesses



Cédric Cabessa
ccabessa@genymobile.com





Summary

- Evolution
- Is Android Embedded ?
- Start with Android
- Pros and Cons



Evolution

- Android Inc founded in 2003
- Acquired by Google in 2005
- Open Handset Alliance founded in 2007
(Samsung, LG, HTC, TI, Nvidia, Intel, ARM, T-Mobile, Google, ...)
- HTC Dream in 2008



Evolution

GENYMOBILE

Let IT be mobile



<http://faqoid.com/advisor/android-versions.php>

- Tablet version: February 2011
- Merge phone / tablet: Octobre 2011



senyomobile



Let IT be mobile

Evolution





SENTRYMOBILE

Let IT be mobile

Car radio :

- Clarion Mirage IVI (Android 2.2 - Froyo)
- Parrot Asteroid (Android 1.5 - Cupcake)



Evolution





3G
4G
5G

Let IT be mobile

Watch :

- Sony Ericsson LiveView
- VEGA Android Watch
- I'm Watch



www.3gWatches.com

Evolution





SEMIMOBILE

Let IT be mobile

Non mobile devices :

- Connected TV
- Set top boxes
- Bus Shelter
- etc.



Evolution





Is Android Embedded?



- Compatibility Definition Document (JellyBean 4.1) :
 - 340 Mo RAM
 - OpenGL ES 1.0 et 2.0
 - Browser < 1300 ms
- Gingerbread (2.3)
 - 128 Mo RAM

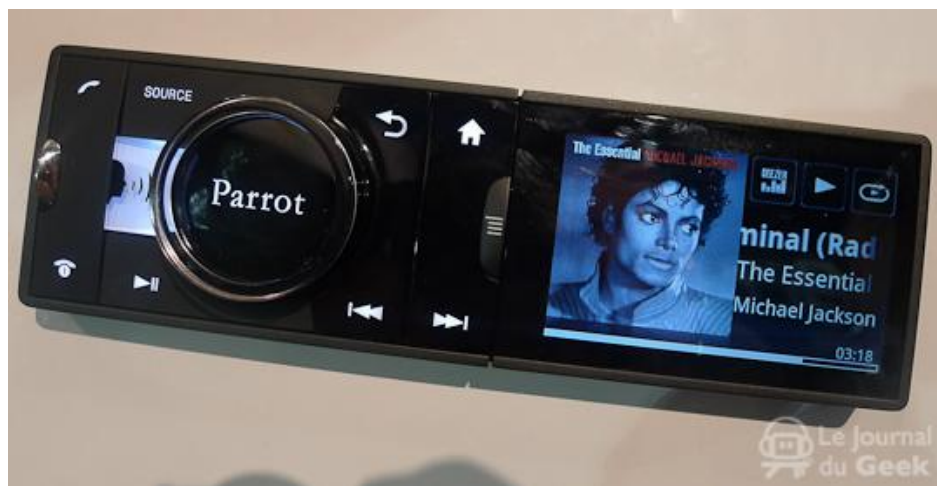


Is Android Embedded?

- Parrot Asteroid :
 - Android 1.5
 - 468 Mhz
 - 256 RAM

SEN4MOBILE

Let IT be mobile

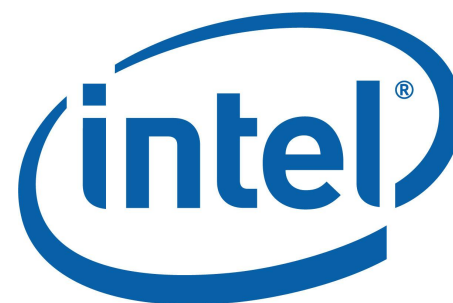




SEMIMOBILE
Let IT be mobile

Is Android Embedded?

- Portability
 - ARM
 - x86
 - MIPS
 - Power Architecture





Start with Android



- Android Open Source Project
 - <http://source.android.com>
 - ~ 6 Go
 - Apache License
- OS = AOSP + Hardware Support
- Hardware :
 - Kernel (android patch)
 - Drivers / library (blob)



Start with Android

- Flagship devices AOSP
 - Nexus : Galaxy, 10, 7, 4
 - Motorola Xoom
 - Pandaboard (experimental)

GENYMOBILE



Let IT be mobile





Start with Android

- Ask your manufacturer
 - Boards available for all Android version
 - Should provide:
 - Kernel
 - Hardware support libraries
 - AOSP patches

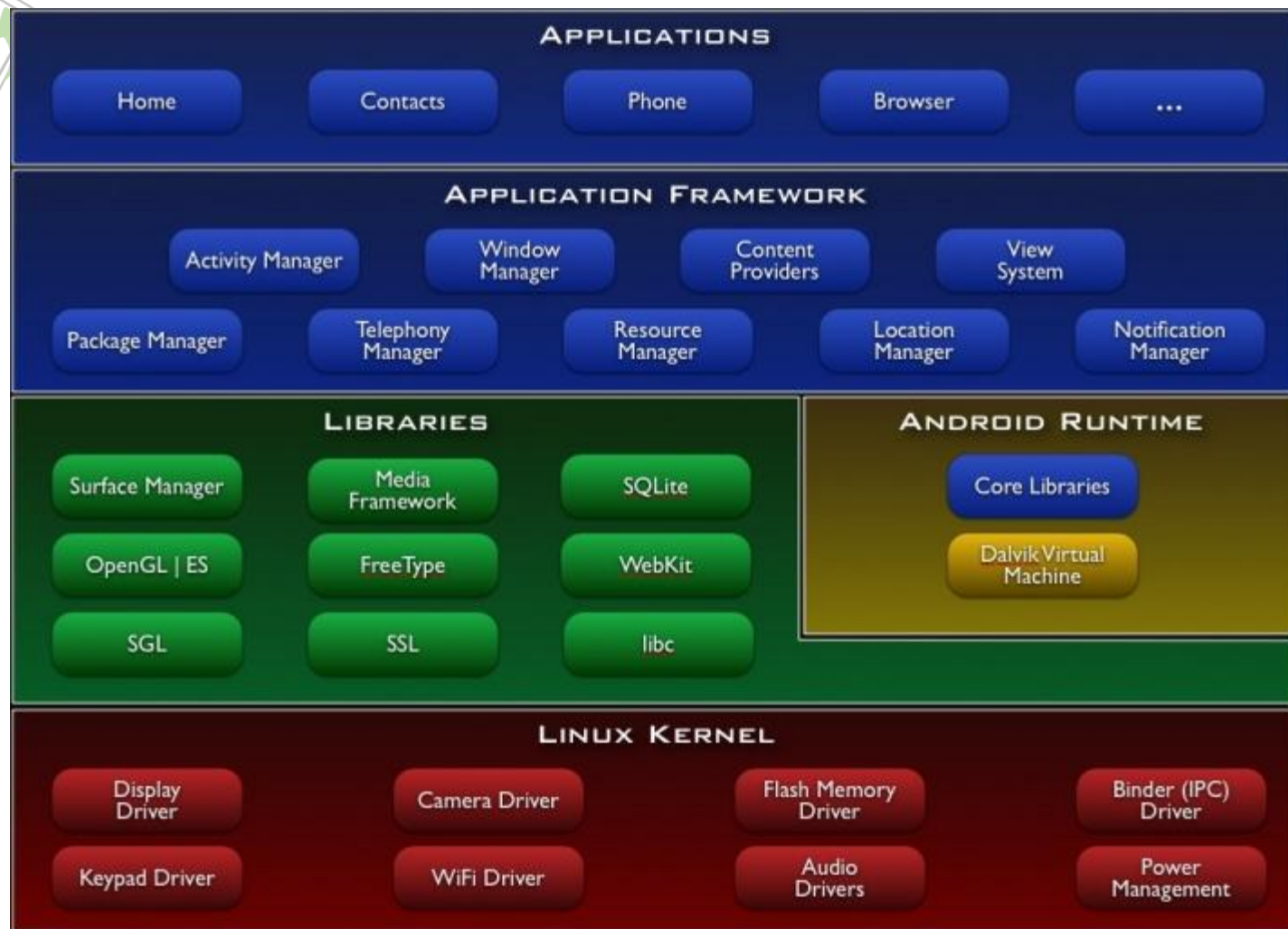




senyomobile

Let IT be mobile

Start with Android

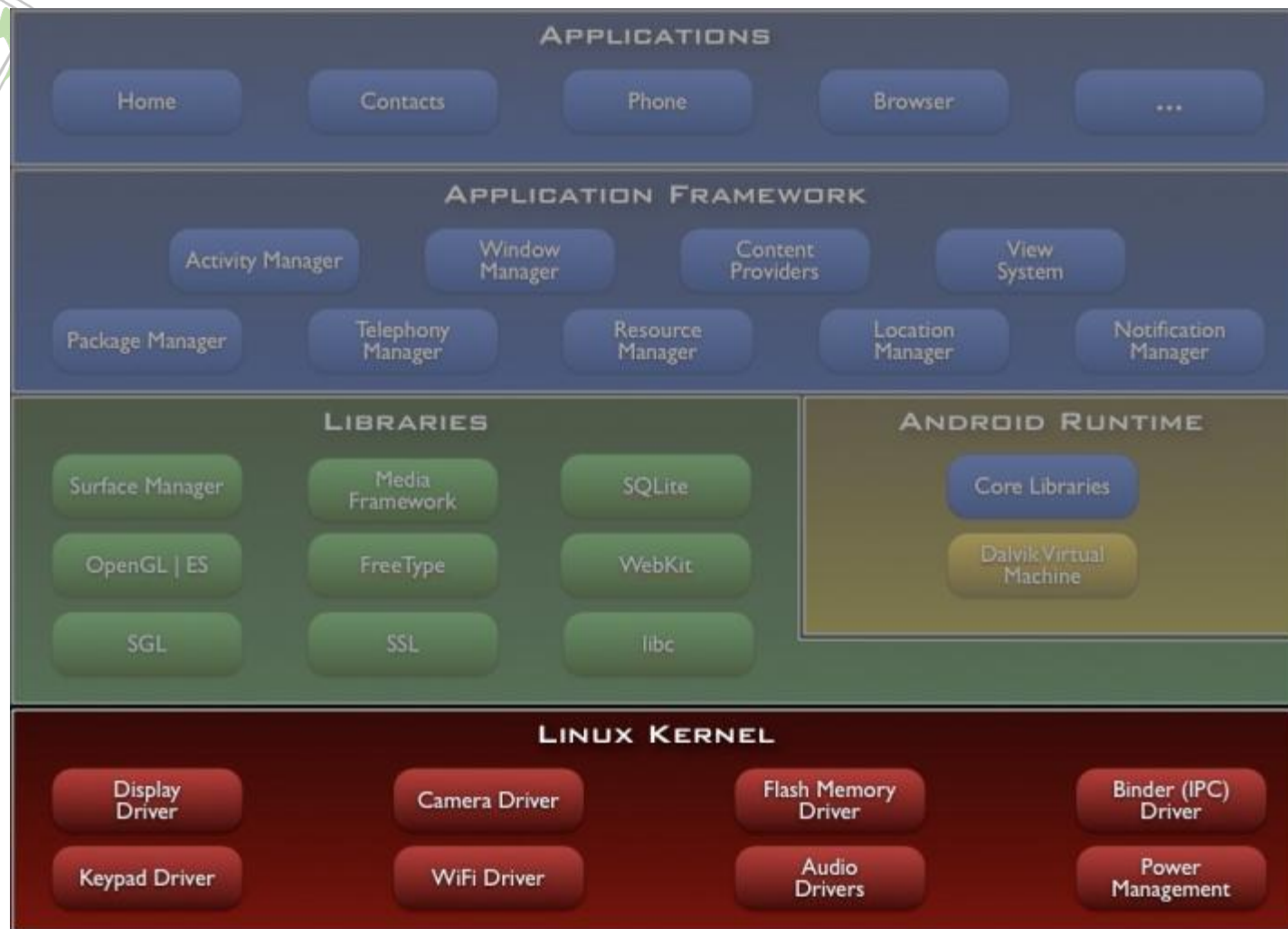




senyomobile

Let IT be mobile

Start with Android

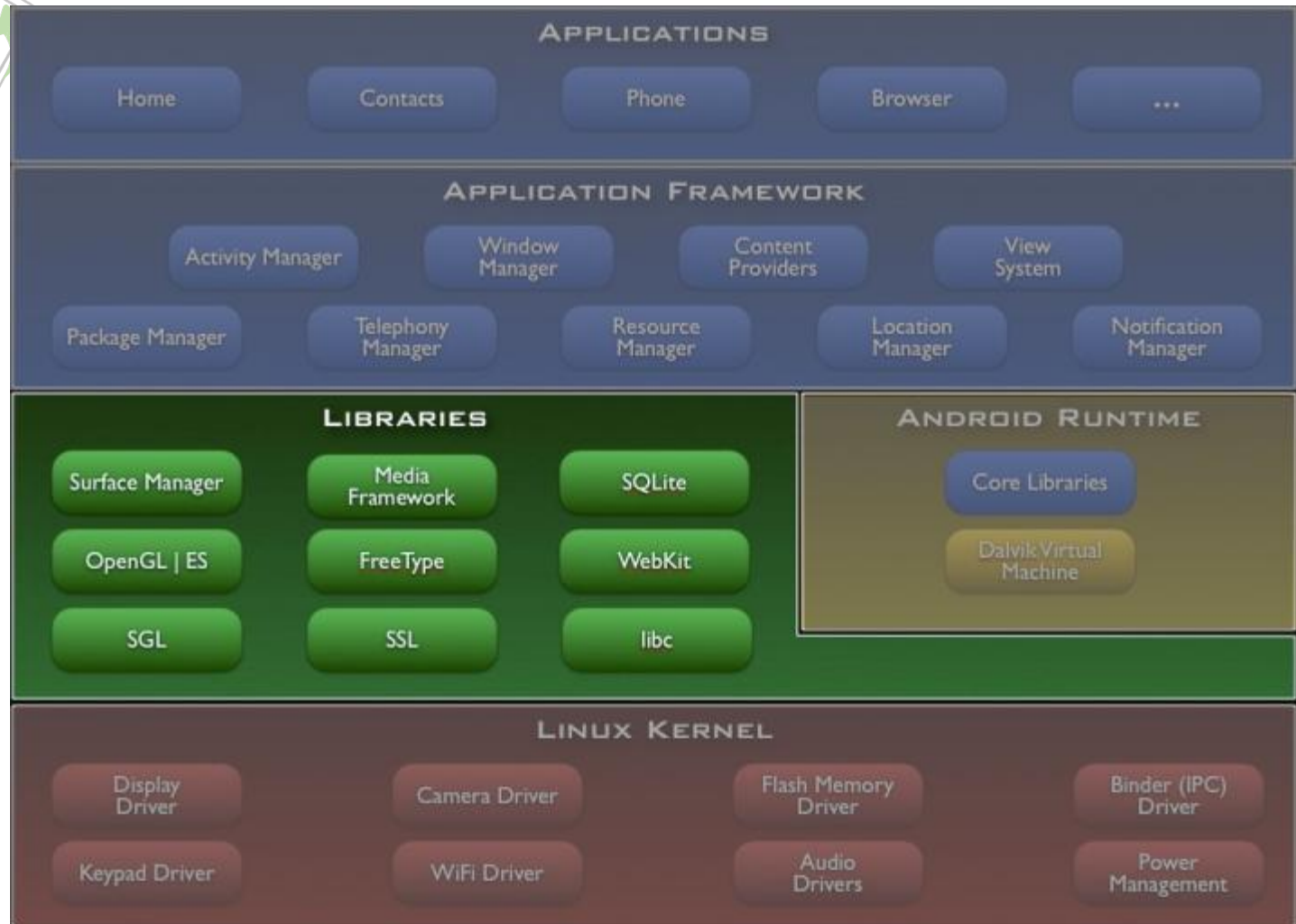


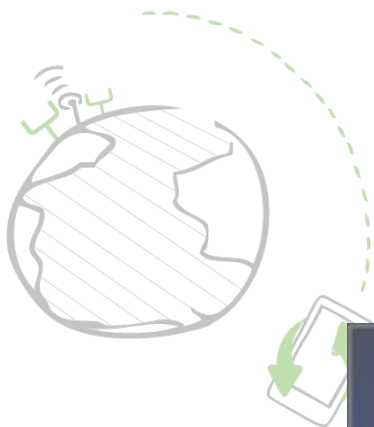


senyomobile

Let IT be mobile

Start with Android



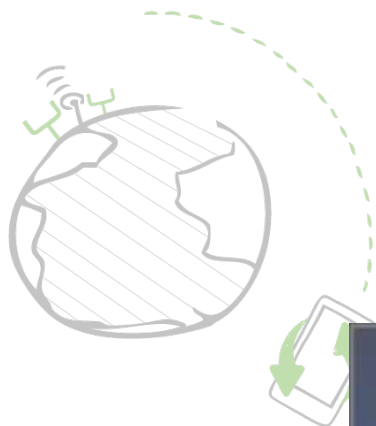


senyomobile

Let IT be mobile

Start with Android





senyomobile

Let IT be mobile

Start with Android

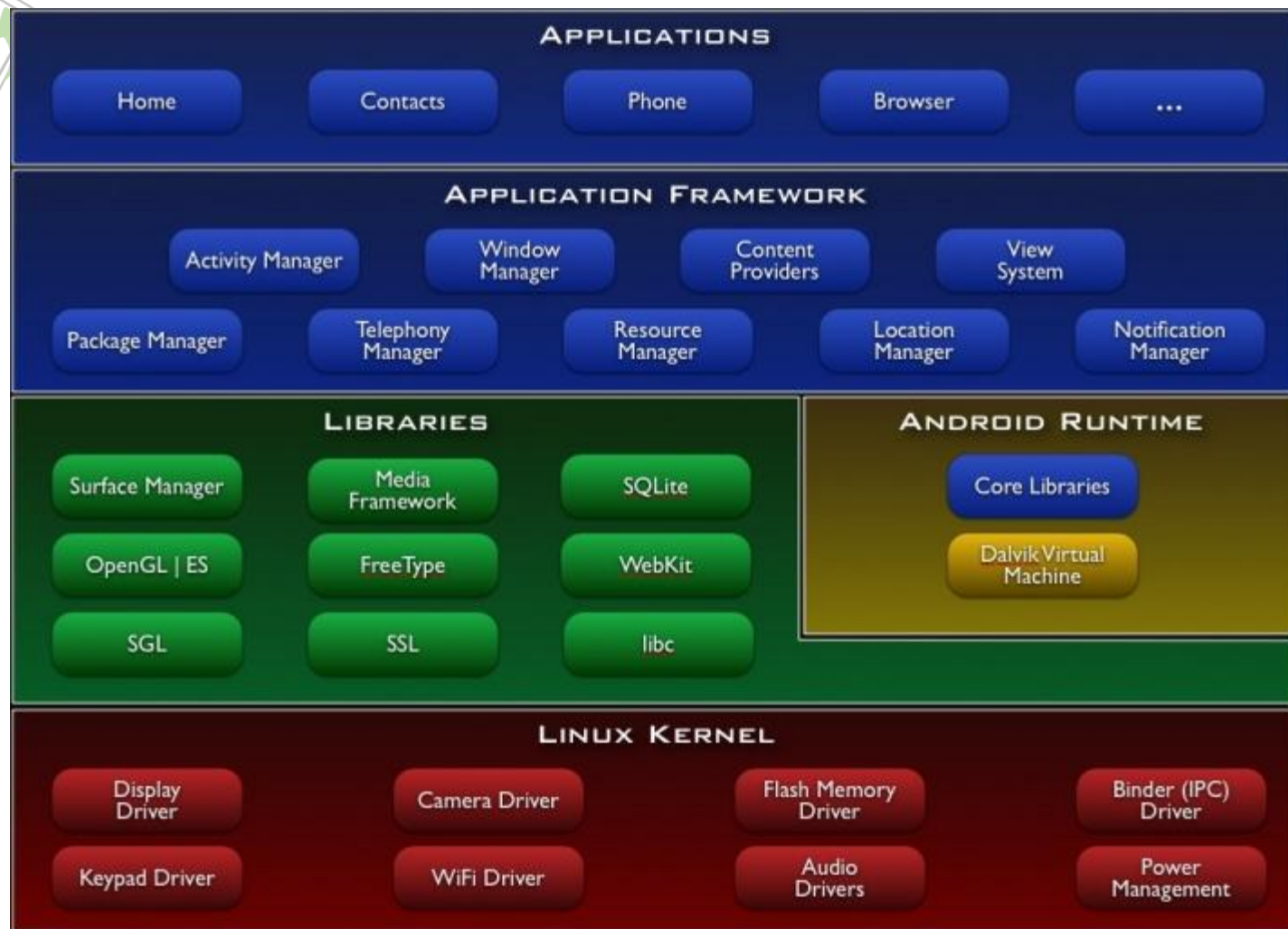




senyomobile

Let IT be mobile

Start with Android





Start with Android



- Fully integrated development environment
 - Eclipse
 - Simulator
 - Debugger (DDMS)
 - Performance analyser (traceview, hierarchy viewer)
 - Static code analyser (lint)
 - Application deployment (Google Play)



Start with Android

- Huge Community
 - User Group (Paug)
 - Stackoverflow
 - Hackathon
 - Dev for fun

GENERAL MOBILE



Let IT be mobile





Pros and Cons

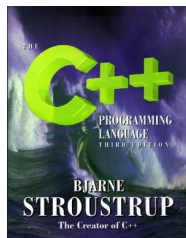
- Android : fully integrated





Pros and Cons

- Linux Embedded: lot of choices



GENYMOBILE

Let IT be mobile



Pros and Cons

- OpenSource ... Google style
 - You can customize your ROM for your needs
 - You depend on Google for the future



Pros and Cons

- User centric
 - App is king
 - GUI
 - Touch screen
 - RS232? CAN?
 - Lot of apps ready to use

GEN4MOBILE



Let IT be mobile

Pros and Cons



GEN4MOBILE



Let IT be mobile

- User centric
 - App is king
 - GUI
 - Touch screen
 - RS232? CAN?
 - Lot of apps ready to use





Q&A

QUESTIONS ?



Cédric Cabessa
ccabessa@genymobile.com
contact@genymobile.com



Genymobile SAS - 41, rue Meslay 75003 PARIS - 01 83 64 25 40
www.genymobile.com